



# SCCConfigMgr

Windows | EM+S | PowerShell

Simplifying Windows Deployments with SCCConfigMgr  
Community Tools





# Nickolaj Andersen



@NickolajA



nickolaj.andersen@truesec.se



Principal Consultant - TrueSec

# Maurice Daly



@MoDaly\_IT



maurice.daly@truesec.com



Principal Consultant - TrueSec



# Agenda

- Modern Driver Management
- Modern BIOS Management
- ConfigMgr OSD FrontEnd
- ConfigMgr WaaS Toolkit (sneak peek)
- New releases published today!

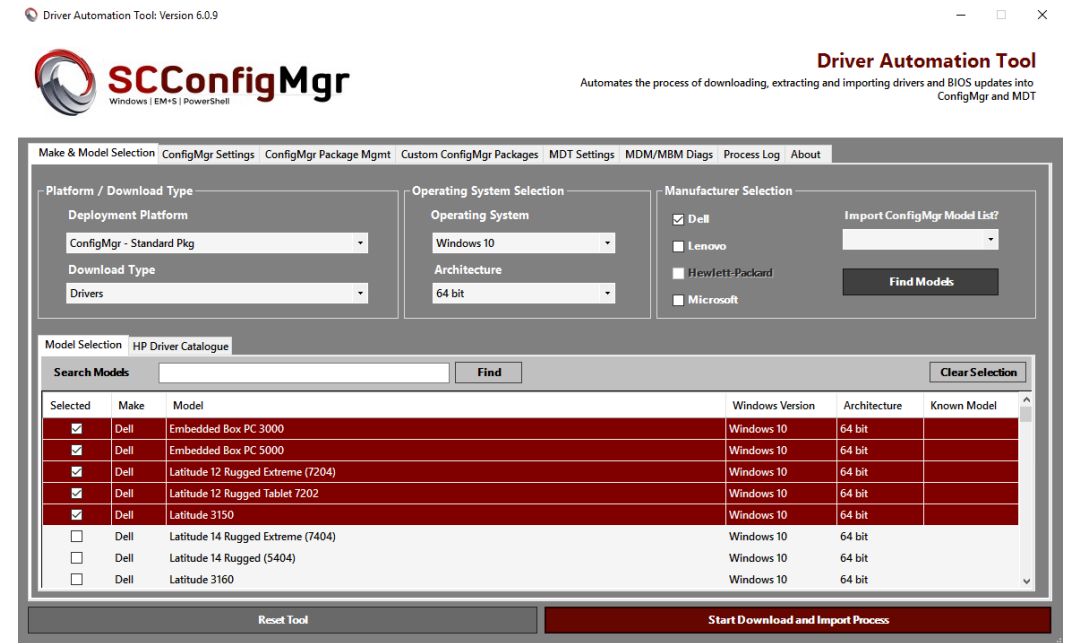


# Modern Driver Management (MDM)

- Dynamic driver detection solution
- Vendor and model detection
  - Dell, Lenovo, HP, and Microsoft
- Operation modes
  - BareMetal, OSUpgrade, DriverUpdate
- Single task sequence step
  - Detect, download and apply (DISM.exe)
  - Pnputil.exe for driver updates

# MDM Components

- Driver Automation Tool
  - Download and create driver packages
- ConfigMgr WebService
  - Used for secure retrieval packages during deployment
- Invoke-CMApplyDriverPackage.ps1
  - Detect, download and inject drivers
  - Logging to ApplyDriverPackage.log



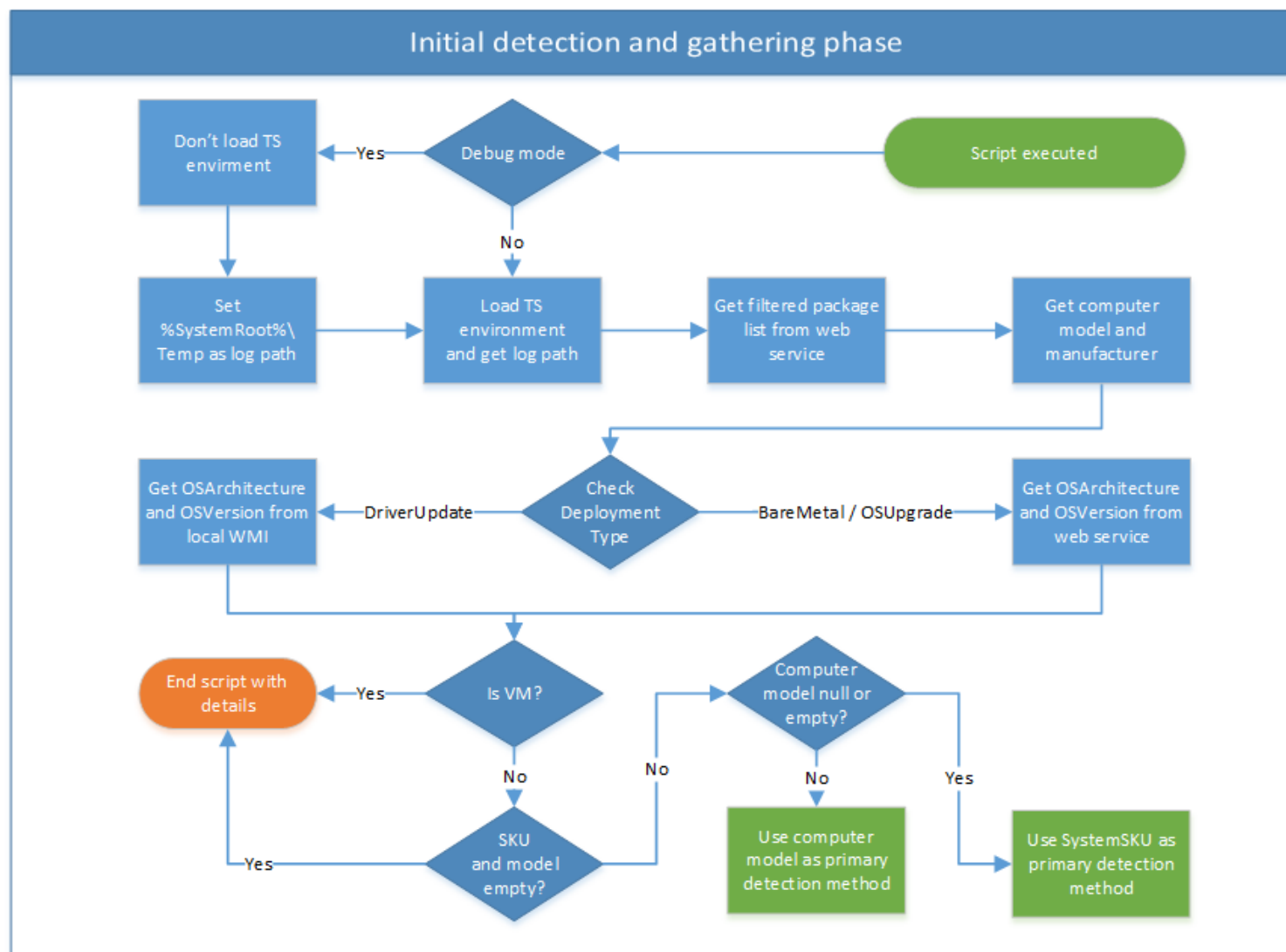


# MDM Updates

- Support for multiple Apply Operating System steps
  - Use OSImageTSVariableName parameter
- Install each driver separately or recursively
  - Use DriverInstallMode
- Updated detection logic with fallback from SystemSKU to computer model
- Panasonic and Viglen added for manufacturer support
  - Only in Invoke-CMApplyDriverPackage.ps1 script

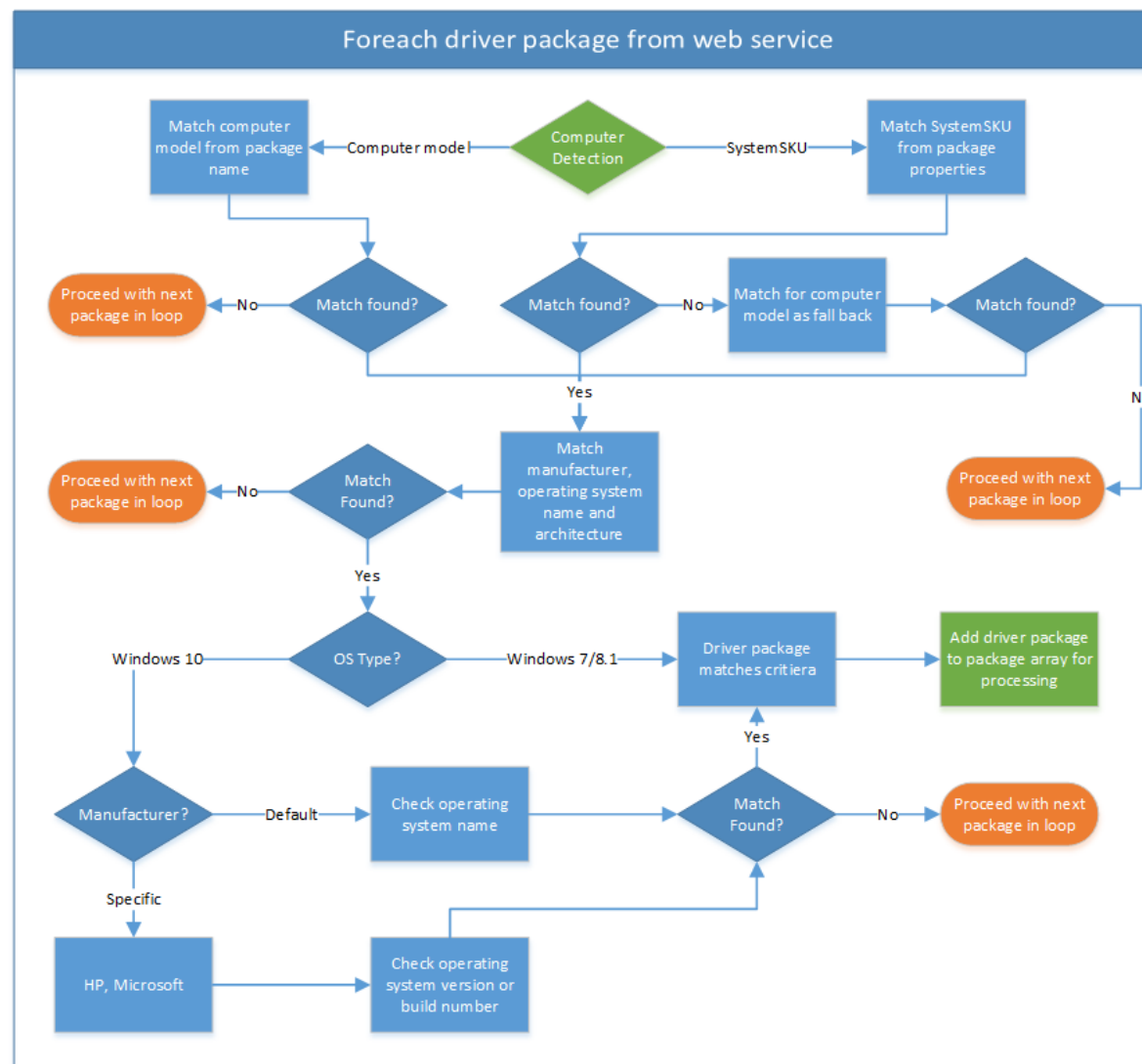


# MDM logic – Gather data





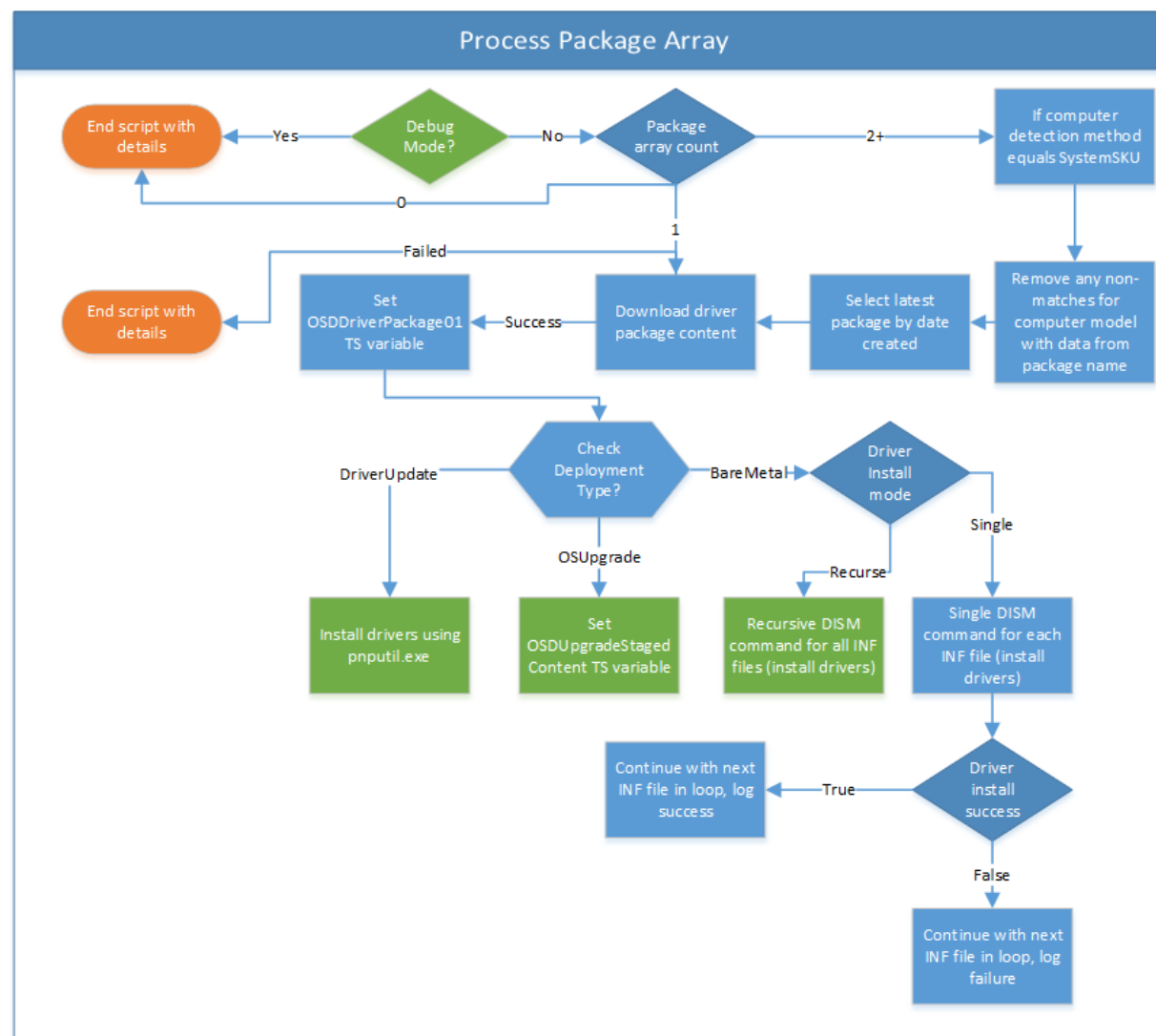
# MDM logic – Matching packages







# MDM logic – Download and apply





# Demo

Modern Driver Management



# Modern BIOS Management

- Dynamic BIOS updating solution
- Vendor and model detection
  - Dell, Lenovo, HP
- Download BIOS setup files with Driver Automation Tool
  - Manually or scheduled
- Two task sequence steps
  - Detect, download
  - Vendor specific update script



# ConfigMgr OSD FrontEnd

- Device configuration at deployment
- Bare-metal and Refresh scenarios
- Integrated with:
  - ConfigMgr and MDT
  - Active Directory
- Enable / Disable sections
  - All except Computer and Deployment
- Customizable branding and more

The screenshot shows the 'CONFIGMGR OSD FRONTEND' window. On the left is a navigation pane with the following items: Authenticate (selected), Preflight, Computer, Deployment, Directory, Role, Regional, Applications, Custom, and User. Below the navigation pane is a satellite dish icon. The main content area is titled 'WINDOWS AUTHENTICATION' and contains the following fields and controls:

- Enter user name:
- Enter password:
- Select domain:
- Keyboard layout: Swedish (Sweden)

At the bottom right of the dialog are three buttons: 'previous', 'next', and 'apply'.



# ConfigMgr OSD FrontEnd Updates

- Select OU location with interactive browser
- Support for multiple domains with computer name validation
- New Custom section
- Customize the text for the Apply button
- Authenticated user name stored in OSDAuthUser
- Deselectable mandatory apps
- Select multiple apps with a single click



# Demo

ConfigMgr OSD FrontEnd 1.4.0



# ConfigMgr WaaS Toolkit

- Utilities to enhance the current in-place upgrade end-user experience
- Features included:
  - Pre-requisite checker before task sequence starts
  - Show fullscreen update notification with progress bar
  - PowerShell scripts for various validation checks
- Currently in development, expecting release during 2018



# Demo

ConfigMgr WaaS Toolkit



# New releases

Let's publish them now



# Resources

- ConfigMgr OSD FrontEnd
  - <http://www.sccconfigmgr.com/configmgr-osd-frontend/>
- ConfigMgr WebService
  - <http://www.sccconfigmgr.com/configmgr-webservice/>
- Driver Automation Tool
  - <http://www.sccconfigmgr.com/driver-automation-tool/>
- Modern Driver Management
  - <http://www.sccconfigmgr.com/modern-driver-management/>
- Modern BIOS Management
  - <http://www.sccconfigmgr.com/modern-bios-management/>



# Nickolaj Andersen



@NickolajA



nickolaj.andersen@truesec.se



Principal Consultant - TrueSec

# Maurice Daly



@MoDaly\_IT



maurice.daly@truesec.com



Principal Consultant - TrueSec